



VESTIL MANUFACTURING CORP.

2999 North Wayne Street, P.O. Box 507, Angola, IN 46703
 Telephone: (260) 665-7586 -or- Toll Free (800) 348-0868
 Fax: (260) 665-1339
www.vestilmfg.com e-mail: sales@vestil.com

**LM-HP-SERIES LOAD HOOK FORK ATTACHMENTS
 INSTRUCTION MANUAL**



Receiving instructions:

After delivery, IMMEDIATELY remove the packaging from the carpet pole in a manner that preserves the packaging and maintains the orientation of the product in the packaging; then inspect the product closely to determine whether it sustained damage during transport. **If damage is discovered during the inspection, immediately record a complete description of the damage on the bill of lading.** If the product is undamaged, discard the packaging.

Notes:

- 1) Compliance with laws, regulations, codes, and non-voluntary standards enforced in the location where the product is *used* is exclusively the responsibility of the owner/end-user.
- 2) VESTIL is **not liable** for any injury or property damage that occurs as a consequence of failing to apply either:
 - a) Instructions in this manual; or b) information provided on labels affixed to the product.





Table of Contents:

| | |
|--|-------|
| Hazard Identification: Explanation of Signal Words..... | 2 |
| Safety Recommendations..... | 2 |
| Label Placement Diagram..... | 2 |
| FIG. 1: LM-HP parts diagram, dimensions, and bill of materials | 3 |
| Installation instructions..... | 3 |
| Use instructions..... | 3 |
| Inspections..... | 3 - 4 |
| Maintenance..... | 4 |
| Limited Warranty..... | 4 |

Hazard Identification: Explanation of Signal Words

This manual uses SIGNAL WORDS to indicate the likelihood of personal injuries, as well as the probable seriousness of those injuries, if the product is misused in the ways described. Other signal words call attention to uses of the product likely cause property damage.


The signal words used appear below along with the meaning of each word:

| | |
|--|--|
|  DANGER | Identifies a hazardous situation which, if not avoided, WILL result in DEATH or SERIOUS INJURY . Use of this signal word is limited to the most extreme situations. |
|  WARNING | Identifies a hazardous situation which, if not avoided, COULD result in DEATH or SERIOUS INJURY . |
|  CAUTION | Indicates a hazardous situation which, if not avoided, COULD result in MINOR or MODERATE injury. |
|  NOTICE | Identifies practices likely to result in product/property damage, such as operation that might damage the product. |

Each person who assembles, installs, uses, or maintains this product should read the entire manual **in advance and fully understand the directions**. If after reading the manual you do not understand an instruction, ask your supervisor or employer for clarification, because failure to adhere to the directions in this manual might result in serious personal injury.

Safety Recommendations:

Vestil diligently strives to identify foreseeable hazards associated with the use of its products. However, material handling is inherently dangerous and no manual can address every conceivable risk. The end-user ultimately is responsible for exercising sound judgment at all times.

-  Improper use of this fork attachment could result in serious personal injuries. EVERY PERSON who might install, use, or perform maintenance on the attachment must understand and apply all of the following recommendations:
- Failure to read and understand the entire manual before installing, using or servicing this fork attachment is a misuse of the product. Read the manual to refresh your understanding of proper use and maintenance procedures when necessary.
 - DO NOT attempt to resolve any problem with the attachment unless: 1) you are authorized to do so; AND 2) you are **certain** that it will be safe to use afterwards.
 - Always inspect the attachment before using it. DO NOT use it unless it is in normal condition. If you observe any damage to any part of the attachment including the nylon safety strap, tag the unit "Out of Service". DO NOT use the attachment until it is restored to normal condition.
 - This device is designed for material lifting only. DO NOT use the attachment to lift or move people or to drag material.
 - Any rigging used to lift a load must be properly attached to the hook before lifting the load off the ground. Be certain that the load is properly balanced and positioned with the center of gravity directly below the hook.
 - DO NOT leave an elevated load unattended. Lower the forks until the load is fully supported by the ground and disengage the load from the hook before leaving it unattended.
 - DO NOT use this attachment to lift and move a load that is unstable when elevated.
 - DO NOT attempt to lift a load that weighs more than the capacity of the attachment OR the lift truck, whichever is smaller. The capacity of your attachment appears on tag 023, which is located on the product as shown in the diagram below.
 - DO NOT elevate any load more than a few inches above the ground. Only (momentarily) increase load elevation if it is necessary to avoid contact with objects in the path of travel.
 - DO NOT raise a load over people or allow anyone to stand or reach beneath a suspended load.
 - DO NOT modify this product in any way. A "modification" is a change that alters the product from original condition, like bending the hook plate or removing parts. **Unauthorized modifications automatically void the limited warranty (see p. 4) and might make the product unsafe to use.**
 - Store the LM-HP in a dry location.

Label placement diagram:

The unit should always be labeled as shown in the diagram below. Replace a label as soon as it sustains damage or becomes difficult to read.



Tag 023: Product specifications
[Tag attaches to handle of unit via zip-tie]

| | |
|---|--------------------------------|
| Model No. _____ | Serial No. _____ |
| No. Modelo _____ | No. Serie _____ |
| Capacity _____ lbs. | Lifter Weight _____ lbs. |
| Capacidad _____ kgs. | Peso del Elevador _____ kgs. |
| BHT-1 Design Category: B | BHT-1 Service Category: 1 |
| BHT-1 Categoría de Diseño: B | BHT-1 Categoría de Servicio: 1 |
| Read Owners Manual for product safety warnings | |
| Lea Manual de Propietarios para advertencias de seguridad de producto | |

Label 218: Proper use
[Label adhered to back side of tag 023]



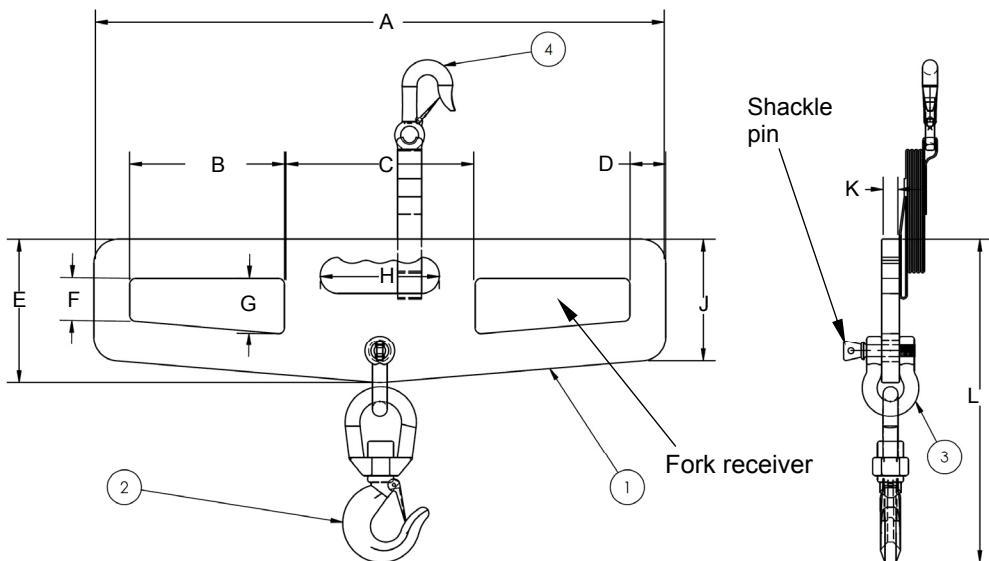
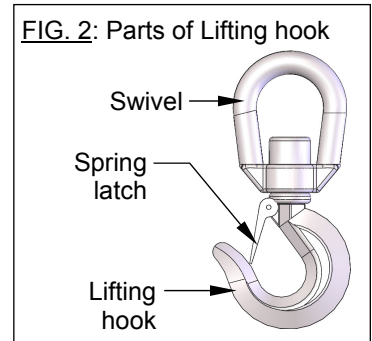
|  WARNING |  ADVERTENCIAS |
|--|--|
| Improper use might result in death or serious personal injury. Attach device to fork carriage with safety chain/strap. | El uso impropio puede resultar en muerte o heridas personales. Atar aparato al mástil del montacargas con cadenas/correas. |
| • Drive lift truck forward until forks contact ends of fork pockets. | • Mueva el montacargas para adelante hasta que las cuñas hagan contacto con la orilla del bolsillo de las cuñas. |
| • Chain/strap must not be able to disconnect (slide free) from carriage. | • La cadena y correa no deben de deslucarse (polizarse) del mástil del montacargas. |
| • Safety chain/strap must be taut. Connect chain/strap to carriage via shortest line. | • La cadena/correa de seguridad debe de estar apretado. Asegure la cadena/correa al mástil via la ruta más corta. |

FIG. 1: LM-HP parts diagram, dimensions, and bill of materials



| Model | Capacity |
|----------|-----------------------|
| LM-HP4-S | 4,000 lb. (1,818.2kg) |
| LM-HP4-R | 4,000 lb. (1,818.2kg) |
| LM-HP6-S | 6,000 lb. (2,727.3kg) |
| LM-HP6-R | 6,000 lb. (2,727.3kg) |



| Item no. | Part no. | Description | Quantity |
|----------|------------|--|----------|
| 1 | 08-028-034 | Fork hook plate | 1 |
| 2 | 08-145-001 | Lifting hook: LM-HP4 [2-ton capacity (4,000 lb.)] | 1 |
| | 08-145-002 | LM-HP6 [3-ton capacity (6,000 lb.)] | 1 |
| 3 | 08-145-003 | Shackle: LM-HP4 [2-ton capacity (4,000 lb.)] | 1 |
| | 08-145-004 | LM-HP6 [3-ton capacity (6,000 lb.)] | 1 |
| | 08-145-028 | Retaining/safety strap with hook | 1 |

| Model | Hook type | A | B | C | D | E | F | G | H | J | K | L |
|----------|-----------|---------------|--------------------|----------------|-------------------|-----------------|-------------------|-------------------|----------------|----------------|-----------------|---------------------|
| LM-HP4-S | Swivel | 24in. 61cm | 6 1/2in. 16.5cm | 8in. 20.3cm | 1 1/2in. 3.8cm | 6 in. 15.2cm | 1 3/4in. 4.4cm | 2 1/4in. 5.7cm | 5in. 12.7cm | 5in. 12.7cm | 3/4in. 1.9cm | 13 1/2in. 34.3cm |
| LM-HP4-R | Rigid | 24in. 61cm | 6 1/2in. 16.5cm | 8in. 20.3cm | 1 1/2in. 3.8cm | 6 in. 15.2cm | 1 3/4in. 4.4cm | 2 1/4in. 5.7cm | 5in. 12.7cm | 5in. 12.7cm | 3/4in. 1.9cm | 13 1/2in. 34.3cm |
| LM-HP6-S | Swivel | 24in. 61cm | 6 1/2in. 16.5cm | 8in. 20.3cm | 1 1/2in. 3.8cm | 6 in. 15.2cm | 1 3/4in. 4.4cm | 2 1/4in. 5.7cm | 5in. 12.7cm | 5in. 12.7cm | 3/4in. 1.9cm | 14 3/4in. 37.5cm |
| LM-HP6-R | Rigid | 24in. 61cm | 6 1/2in. 16.5cm | 8in. 20.3cm | 1 1/2in. 3.8cm | 6 in. 15.2cm | 1 3/4in. 4.4cm | 2 1/4in. 5.7cm | 5in. 12.7cm | 5in. 12.7cm | 3/4in. 1.9cm | 14 3/4in. 37.5cm |

Installation & Use Instructions: This product is a fork attachment. Therefore, the owner should request that the fork truck manufacturer (or a professional engineer) determine how its use will affect the capacity, operation and maintenance of the fork truck. Plates, tags, labels, etc. affixed to the truck should be changed accordingly. The truck should also be marked to identify the attachment and to display the approximate weight of the truck and attachment combination at maximum elevation with load laterally centered.

To install the LM-HP:

- 1) Adjust the positions of the forks to align with the fork receivers (see above); then slide the unit onto the forks. Keep the forks level and position the LM-HP along the lengths of the forks as necessary.
- 2) Attach the safety strap to the fork carriage of your lift truck. Wrap the safety strap around the fork carriage. Attach the hook at the free end of the safety strap to the safety strap. The strap must be wrapped around the carriage a sufficient number of times so that there is no slack in the strap. When properly attached, the strap should prevent the unit from sliding forward on the forks.
- 3) Connect the load to the hook via appropriate rigging. The weight of the load must not exceed the capacity of the hook. [NOTE: The capacity is cast on the surface of the hook and it is displayed on tag 023 (see "Label placement diagram" on p. 2).] Connect the load to the hook in a manner that will minimize load swing when the load is lifted off of the ground. Swinging loads might cause injuries and/or damage equipment.

Inspections: Inspect the LM-HP as described to ensure that the unit is and remains in normal, safe operating condition.

Before each use (including the first use) inspect:

1. Handle and pry plate: look for regions of significant wear, cracks, deformation and rot.
2. Wheels and mounting hardware: roll the pry bar to confirm that the wheels and bushings are in normal condition. Examine the axle, machine bushings and cotter pins. The axle should be straight and undamaged. Bushings should

be undamaged and allow the wheels to turn smoothly without contacting the cotter pin. The cotter pin should be undamaged and securely attached to the axle pin.

3. Product labels: all labels should be readable and located as shown in the "Label placement diagram" on p. 2. If a label is unreadable or missing, contact Vestil to order a replacement.

(A) Before each use and AT LEAST once per month, inspect the following:

Hook spring latch: Confirm normal condition and proper operation of the spring latch.

Hook, swivel, & shackle: Check each component for significant wear, looseness, distortion & damage.

Hook plate: Inspect the main body for deformation, cracking, etc.

Safety strap: Closely examine the strap, snap hook, and the hook at the free end of the strap. Look for thinned, frayed, torn, or significantly worn areas.

Labels: Frequently examine the labels. Confirm that each label is present (see "Label placement diagram" on p. 2), readable, and in good condition.

(B) Load test: At least once per year, use the LM-HP to lift a full capacity load. Observe the unit from a safe distance. Pay particular attention to the hook, shackle and swivel (-S models). Hold the load for ~1 minute; then lower it and disconnect it from the hook. After the load is removed, closely inspect all parts and surfaces of the entire LM-HP for fatigue, cracks or deformation. If any significant damage is observed, remove the unit from service.

Maintenance: Proper use, maintenance, and storage are essential for this product to function properly.

1: Clean all surfaces of the unit.

2: Inspect the unit. If deformity, cracks, or excessive wear is discovered DO NOT use the product.

3: Perform all necessary adjustments, replacements and/or repairs. ONLY install replacement parts supplied or approved by the manufacturer.

LIMITED WARRANTY

Vestil Manufacturing Corporation ("Vestil") warrants this product to be free of defects in material and workmanship during the warranty period. *Our warranty obligation is to provide a replacement for a defective original part if the part is covered by the warranty, after we receive a proper request from the warrantee (you) for warranty service.*

Who may request service? Only a warrantee may request service. *You are a warrantee if* you purchased the product from Vestil or from an authorized distributor AND Vestil has been fully paid.

What is an "original part"? An original part is a part used to make the product as shipped to the warrantee.

What is a "proper request"? A request for warranty service is proper if Vestil receives: 1) a photocopy of the Customer Invoice that displays the shipping date; AND 2) a written request for warranty service including your name and phone number. Send requests by any of the following methods:

Mail
Vestil Manufacturing Corporation
2999 North Wayne Street, PO Box 507
Angola, IN 46703

Fax
(260) 665-1339
Phone
(260) 665-7586

Email
sales@vestil.com

In the written request, list the parts believed to be defective and include the address where replacements should be delivered.

What is covered under the warranty? After Vestil receives your request for warranty service, an authorized representative will contact you to determine whether your claim is covered by the warranty. Before providing warranty service, Vestil may require you to send the entire product, or just the defective part or parts, to its facility in Angola, IN. The warranty covers defects in the following *original* dynamic components: motors, hydraulic pumps, electronic controllers, switches and cylinders. It also covers defects in *original* parts that wear under normal usage conditions ("wearing parts"): bearings, hoses, wheels, seals, brushes, batteries, and the battery charger.

How long is the warranty period? The warranty period for original dynamic components is 90 days. For wearing parts, the warranty period is 90 days. The warranty periods begin on the date when Vestil ships the product to the warrantee. If the product was purchased from an authorized distributor, the periods begin when the distributor ships the product. Vestil may, at its sole discretion, extend the warranty periods for products shipped from authorized distributors by *up to* 30 days to account for shipping time.

If a defective part is covered by the warranty, what will Vestil do to correct the problem? Vestil will provide an appropriate replacement for any *covered* part. An authorized representative of Vestil will contact you to discuss your claim.

What is not covered by the warranty?

1. Labor;
2. Freight;

3. Occurrence of any of the following, which automatically voids the warranty:

- Product misuse;
- Collisions or incidental contacts causing damage to the product;
- Negligent operation or repair;
- Unauthorized modifications: DO NOT modify the product IN ANY WAY without first receiving written authorization from Vestil. Modification(s) might make the product unsafe to use or might cause excessive and/or abnormal wear.
- Corrosion or use in corrosive environments;
- Inadequate or improper maintenance;
- Damage sustained during shipping;

Do any other warranties apply to the product?

Vestil Manufacturing Corp. makes no other express warranties. All implied warranties are disclaimed to the extent allowed by law. Any implied warranty not disclaimed is limited in scope to the terms of this Limited Warranty.

